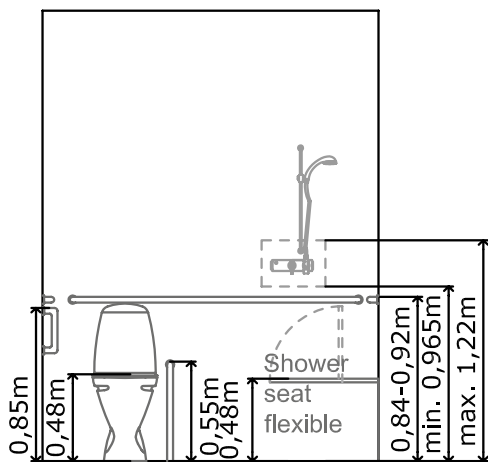


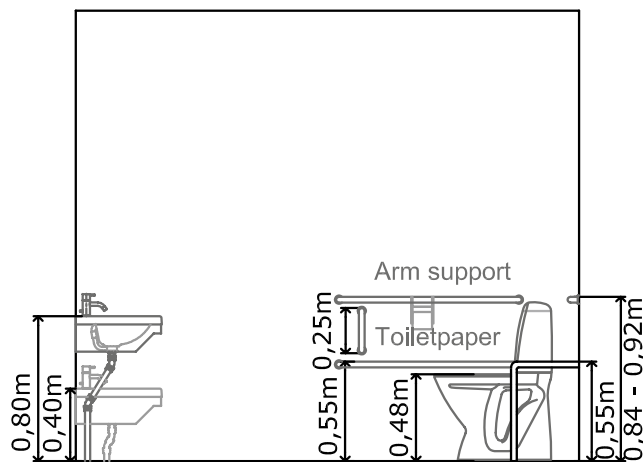
Chapter 7

Accessible Toilet with Shower

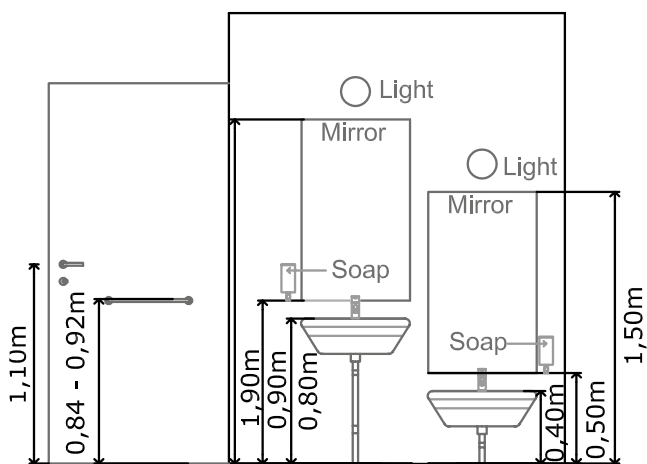
Accessible Standard



Front view

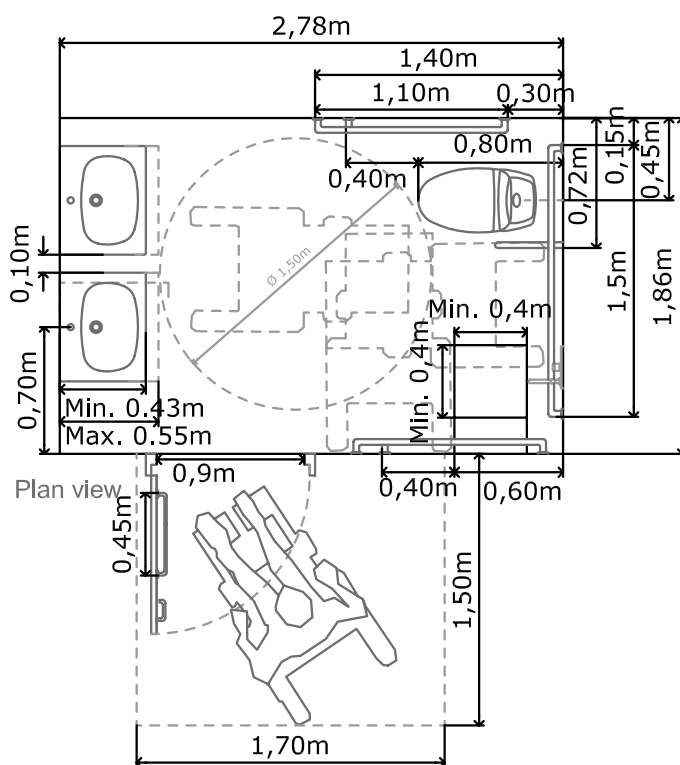


Side view



Side view

Low sink for crawling people



Plan view

Chapter 7

Accessible Toilet with Shower

Accessible Standard

(7.1) PLANNING PRINCIPLE

Toilets with showers should be designed in such a way that they can easily be used by persons with disabilities. At least two toilets (males/females) in every public/private building should be provided specifically for PWDs.

(7.2) ROOM

The size of the toilet shall be of minimum dimension of 2.78X1.86m.

The size of the toilet should have a turning diameter of 1.50m (for wheelchair users), and free of any obstructions.

On the side of the toilet, in between the toilet and the sink, a free floor space of min. 0.9m shall be provided for easy transfer from a wheelchair.

(7.3) ACCESS

The pathway should be without any changes in level to the toilet entrance.

If change in levels occurs outside the facility, it should be connected with a horizontal landing area placed at the same level as the interior floor level of the facility.

The size of this landing area should be 1.70x1.50m for easy manouvering of a wheelchair.

A change in level to the landing area should be connected by means of a ramp (See Chapter 1. Ramps). If changes in levels are necessary, these shall be max. 25mm.

(7.4) DOOR

The door should have a minimum clear opening of 0.9m wide.

In general, the door should be outward opening for a clear floor space in the toilet room.

The door should be smooth running with a handle that is easy to operate. The distance between the handle and vertical door surface should be 50mm.

The locking handle (extended type) should have a shape that is easy to grasp with one hand (See Chapter 10: Handles).

On the pull side, the door should be provided with a “pull handle”.

To operate the door successfully, space must be provided for wheelchair users to place themselves outside the swing area of the door.

(7.5) TOILET SINK

There should be two separate sinks placed at different heights to cater for different disabilities.

A high sink 0.8m above finish floor must be placed for people who can stand upright.

A low sink 0.4m above finished floor must be placed for crawling people / children.

Under the sink, there should be a free height for the knees and feet supports of the weelchair user. Therefore, the drain should be moved back to the wall.

The water control taps should be the push type that can be pushed with either elbow or closed fist so that it is easy to operate with one closed fist.

(7.6) TOILET SEAT

The toilet seat should be mounted at a height of 0.48m above the finished floor.

From the front of the toilet to the wall where the toilet is mounted should be 0.80m.

The toilet must have a lever-type flush control fixed towards the wheelchair transfer side to facilitate flushing after transfer.

(7.7) HAND RAILS

Handrails should be fixed at the back and on the wall next to the toilet seat and at the back of the shower seat.

A vertical handrail should be placed on wall next to the toilet seat and the shower seat supporting crawling people.

Upper handrails should be mounted at a comfortable height between 0.84-0.92m from the floor surface.

Chapter 7

Accessible Toilet with Shower

Accessible Standard

Lower handrails should be mounted at a comfortable height of 0.55m from the floor surface.

The handrails should be at diameter (Ø) of 32-38mm and be made of preferably metal or any other approved strong and standard material.

(7.8) MIRROR

Each sink should have a separate mirror. The mirror for the lower sink should be placed between 0.50-1.50m and one for higher sink should be placed between 0.90m-1.90m from floor surface.

(7.9) HAND DRYER/LIQUID SOAP/PEGS

The hand dryer/liquid soap outlet for the lower sink should be mounted at an approximate height of 0.50m from the floor surface, for high sink at 0.9m.

(7.10) SHOWER SEAT

The shower seat should be placed at a comfortable height of 0.48m from the floor surface.

The shower seat should be flexible and possible to tip-up, but fixed firmly in one position.

The material in which the shower seat is made should be non-slippery when wet to avoid accidents such as sliding off the seat.

(7.11) SHOWER TAPS

The shower tap should be located in a reachable distance to the shower seat.

Shower taps should be mounted at a comfortable distance between 0.96-1.22m from the floor surface.

The water control taps should be of push type that can be pushed with either elbow or closed fist so that it is easy to operate with one closed fist.

(7.12) DIRECTION/SAFETY

Accessible public toilets should have the universally accepted symbol for wheelchair access displayed outside and supplemented by a text in embossed letters or in Braille.

Corridors inside a public toilet should be of minimum width of 1.5m wide.

If possible, there should be a separate toilet specifically reserved for PWDs and kept clean.

(7.13) LIGHT

There should be a good, even, natural and mirror light in the room for the toilet with shower. The light switch should be placed at the wall next to the door lock/handle at a maximum height of 0.9m above finished floor.

(7.14) FLOOR SURFACE

The floor surface within the toilet should be of non-slip materials without changes in level.

(7.15) ALTERNATIVE LAYOUT

In case of difficulty in conforming to the requirements of a toilet or obtain an optimal solution, UNAPD offers advice.

Please be aware that the above instructions apply to both public and private toilets.

(7.16) URINALS

Any person who constructs a urinals should designate an area for use by persons with disabilities and wide enough for wheelchair users.

The urinals should be stall-type or wall-hung with an elongated rim to make them user friendly to someone in a wheelchair.

There should be three urinals mounted at different heights with the highest at 0.90m above the finished floor to cater for different disabilities.

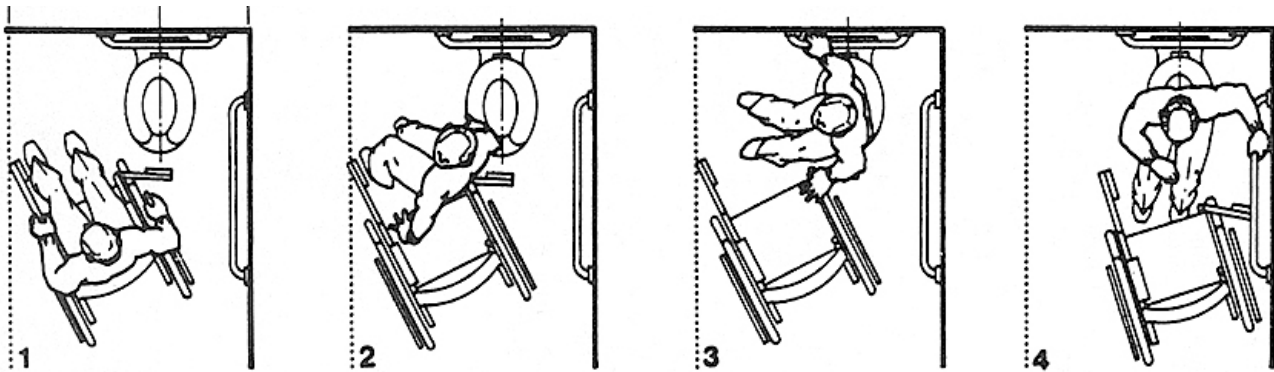
Clear floor surface of 1.5m by 0.80m should be provided in front of urinals to allow forward approach by a wheelchair user.

Where need be, a ramp leading to the urinals should be constructed using non-slippery materials.

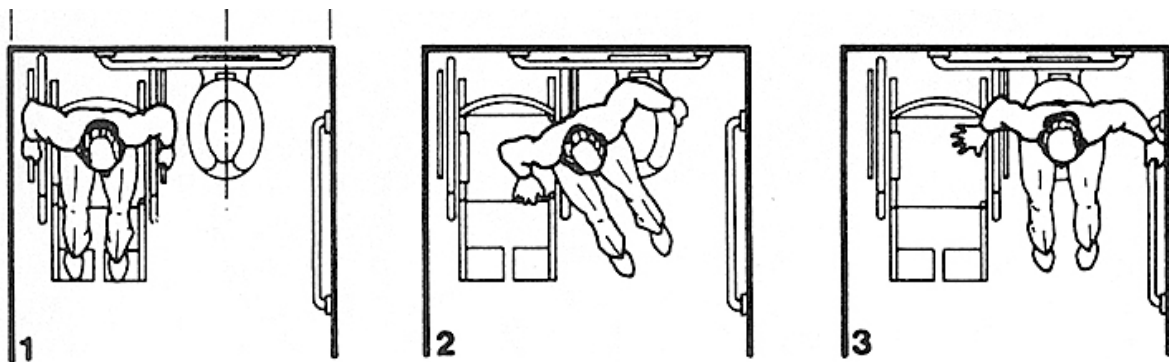
Chapter 7

Accessible Toilet with Shower

Accessible Standard



How a wheelchair user gets from the wheelchair onto a toilet-seat (1-4)



How a wheelchair user gets off from the toilet-seat back to the wheelchair (3-1)